

MacARTHUR



BRAHMAS

WEAR  
OUT



THE

VOLUNTEERS

# Lee Wins Third Straight With 14-0 Win Over Mac

By FRED WALKER

Lee's unblemished Volunteers, able to convert turnovers where MacArthur was not, scored at almost identical points in the second and fourth quarters Friday night to whitewash the arch-rival Brahmas, 14-0, in a bone-rattling grinder before 7,772 fans at North East Stadium.

Also present was one of San Antonio's most illustrious athletic products, former college and pro star quarterback Tobin Rote, now quarterback coach at Rice University. Rote is a graduate of Harlandale High School.

Rote had a good bit to view, for it was the blue-chip passing combination of junior quarterback Tommy Kramer and senior split end Richard Osborne who collaborated from 37 yards out at 6:15 of the second period.

The clincher came with 6:13 left in the game when tailback Greg Colchin went up and over the pile from the 2. Kramer

converted after both scores.

It was Colchin who started the stampede toward the first tally as he broke off back-to-back 15-yard blasts to put the 85-yard, six-play march into high gear.

The last two plays of the push were passes from Kramer, 15 yards to Pat Rockett to the Mac 37, and the rest of the way to Osborne as the 6-5 strongboy took it looking back at the 15 and never broke stride.

Lee applied the insurance touchdown by going 31 yards in four plays and a penalty against MacArthur after Jimmy Burkholder came up with Lee's fifth fumble recovery of the bruising game.

Wingback Bruce Jones had nine and 11-yard gains to highlight the short march.

## COULDN'T CASH IN

MacArthur, which had entered the contest 1-1 and boasting the city's No. 3 club in total offense, found it could not dent the No. 1 defense in

the city—particularly when it was unable to cash in on four fumble recoveries and the first pass interception of the season of Kramer.

The Brahmas were first down at the Lee 25 starting the second quarter, but two plays later fumbled the ball away. Lee fumbled right back but, with end Bill Fry harrying Mac quarterback Brad Wheelles, the Brahmas ultimately punted.

The "crusher" came early in the third quarter after Don Giles recovery of a Lee fumble gave Mac possession at the Vols' 14. Tailback George Henderson, extremely well-balanced and as slippery as they come, had gains of five and eight yards to set up a first down on the 1.

## LEE RECOVERS

But on the next play he fumbled up the middle and Rockett recovered for Lee on the 2.

MacArthur never recovered. It netted only 37 yards there-

after on 18 plays—and 24 were through the air.

The hitting in this match of two backyard rivals was tremendous and had a great deal to do with the fumbling.

The Vols rolled up 186 yards on the ground with the senior Colchin leading the way with 77 yards on 10 carries.

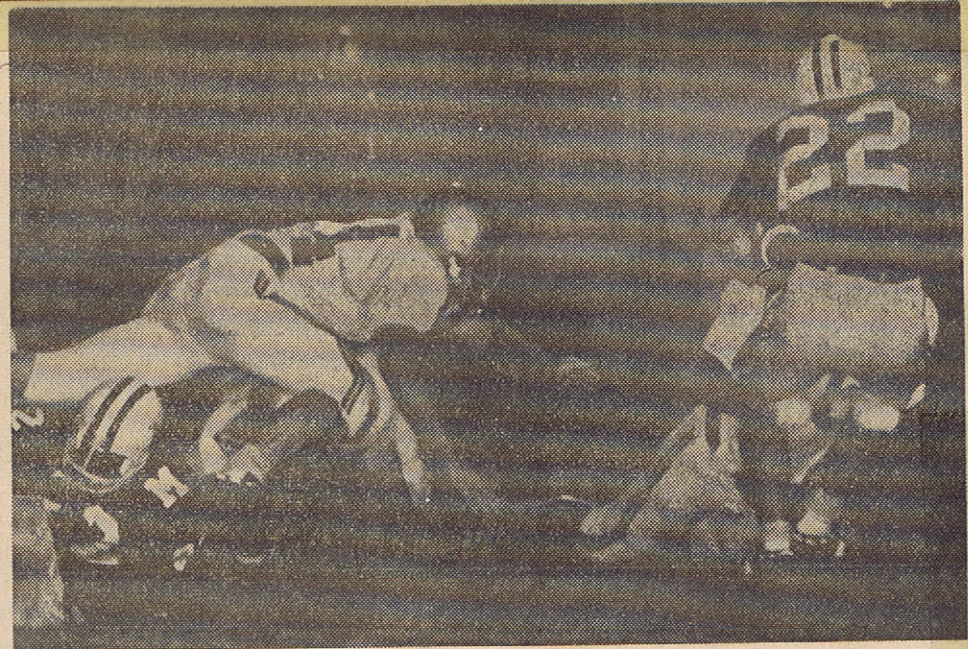
The strong-armed Kramer, who was 9-18-1 aloft for 142 yards, and Jones added 34 yards each and fullback Johnny Coles 40.

Henderson had 64 yards on 16 carries for Mac, which used city rushing leader Danny Armstrong as a decoy. He carried only seven times and collected but 28 yards — 13 coming on a draw in the fading seconds — after entering the game with 213 yards and a 7.3 average.

## CAUGHT SIX

The 6-5 Osborne once more showed why he is an all-state

(Continued on Page 3-B, Col. 6.)



**MACARTHUR HERALDED** ground } Jeff Large is here — by Lee Friday  
 attack was stymied — just as Brahma } night. The Volunteers posted a 14-0 win.

## Lee Stops Brahmas By 14-0

(Continued from Page 1-B.)  
 receiver, taking seven passes for 105 yards. He was rivaled, however, by Mac's strong Kenvin Vindall, who caught four passes with finesse.

The Burkholder boys, Tommy and Jimmy, tackle Steve Harmon and ends Fry and Dennis King were defensive standouts for now 3-0 Lee. Eric Ehninger had a first-rate night for the Brahmas with John Snell, Jeff Large and Giles in support.

|           |   |   |   |      |
|-----------|---|---|---|------|
| Lee       | 0 | 7 | 0 | 7-14 |
| MacArthur | 0 | 0 | 0 | 0-0  |

### STATISTICS

|                 | Lee    | MacArthur |
|-----------------|--------|-----------|
| First Downs     | 18     | 10        |
| Rushing Yardage | 37-186 | 38-95     |
| Passing Yardage | 142    | 58        |
| Return Yardage  | 5      | 10        |
| Passes          | 9-20-1 | 6-13-0    |
| Punts           | 2-40.5 | 5-36.0    |
| Fumbles Lost    | 4      | 5         |
| Yards Penalized | 50     | 62        |